

Miss Boggs

FILMS
OF
BRITAIN
1941

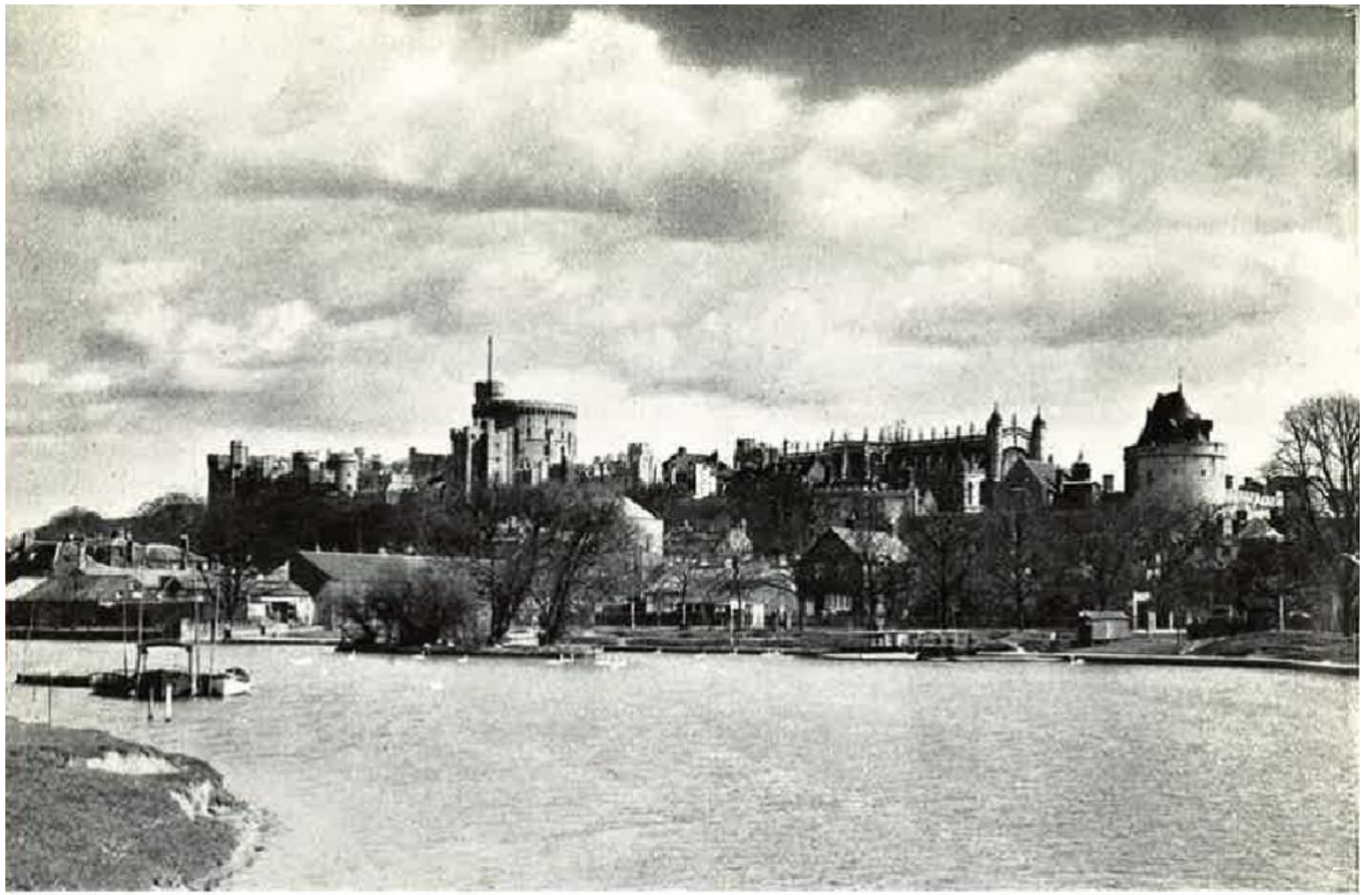


Introduction

These films form part of an effort to portray the face of Britain and her people in their everyday lives and work, as they went about them in the eager, anxious months of a great war. There is no attempt in this series to depict the nation's war-effort or to state the issues which the war raises for ordinary men and women throughout the world. That duty is quite distinct from our purpose, which is directed by a broader design. War propaganda in the narrow sense forms no part of it. Yet it is scarcely possible to view this panorama of decent-minded life, of wheels revolving in great industries and public services, of a community which cares for the minds and bodies of its humblest members, without a thought of the challenge of ignorance and brutality confronting it. That challenge overhung it, as these films were made; and the men and women who play their simple parts in them outfaced it daily. But these level-headed studies of British subjects bear little trace of war's excitement. They show the enduring fabric of freedom and progress, which lives and works long after war-makers have been forgotten.

PHILIP GUEDALLA
Chairman, Film Committee

THE BRITISH COUNCIL FILM DEPARTMENT
3 Hanover Street, London, W.1



Above: WINDSOR CASTLE
Below: HOUSES OF PARLIAMENT

British News



British News

(ONLY AVAILABLE IN THE COLONIAL EMPIRE)

This newsreel, entitled 'British News', is made up each week and is specially edited from material published in the ten weekly issues of the five British newsreel companies. It contains news of Great Britain, the Dominions, India and the Colonial Empire, particularly in relation to the war and the part played in it by all Empire countries, and is the only newsreel in the world dealing entirely with British news items.

Each of the five newsreel companies, working in rotation, undertakes production of 'British News', which is considerably longer than any other newsreel, and in its compilation all available material is viewed.

With the technical advice of the company handling the film each week an official editorial committee decides which items of news from the ten commercial reels should be included in the composite reel.

This visual news service was originally started for showing in the cinema of the British Pavilion at the New York World's Fair, where it achieved great popular success in both 1939 and 1940. It is now being despatched weekly by the most rapid available means to all British Colonies.



Above: ARCHITECTS OF ENGLAND
Below: CITY BOUND

The Answer

BRITAIN'S CHECK TO THE GERMAN DRIVE FOR
WORLD DOMINION

The German march across Europe is halted at the English Channel. The marching songs of slavery are drowned by the songs of a free people, united against aggression. The regions of Britain are seen in panorama. In East Anglia the farmworker breaks new ground for food production. In Yorkshire the steelworkers increase their output of molten metal. The mineworkers of South Wales labour to produce more coal. The shipyard men of Northern Ireland work day and night to build ships for Britain, and the fishermen of Cornwall and the shepherds of Scotland are making valuable additions to the Nation's food supply. All are united behind their King in the freeman's reply to Nazi tyranny.

| | | |
|-------------------------------|---|------------------------------|
| SPECTATOR | SOUND | TIME: 12 MINUTES |
| SHORT FILMS | LENGTH: 35 MM.: 1,608 ft. 16 MM.: 654 ft. | |
| <i>Production: Ivan Scott</i> | | <i>Direction: Alex Bryce</i> |

Architects of England

THE PAST AND PRESENT OF ENGLAND'S ARCHITECTURE

To-day, Britain's architects are using steel, concrete and glass in new and interesting methods of building. Hundreds of years ago Saxon and Norman church builders used stone. As English masons grew more skilled in its use, they grew more venturesome in building, eventually creating the peerless 'Early-English' style. Builders of Tudor and Elizabethan houses made extensive use of brick. Inigo Jones and Christopher Wren employed foreign styles of building with English materials, such as Portland stone, red brick, and slate. In the eighteenth century plaster was widely used. Modern architects have a far wider choice of materials and use them with skill and ingenuity.

| | | |
|----------------------------------|---|---------------------------------|
| STRAND | SOUND | TIME: 13 MINUTES |
| FILM CO. | LENGTH: 35 MM.: 1,181 ft. 16 MM.: 512 ft. | |
| <i>Production: Donald Taylor</i> | | <i>Direction: John Eldridge</i> |

City Bound

LONDON'S TRANSPORT SYSTEM

Between half past five and ten o'clock each morning five million people are moved from home to work by London's transport system. Before this can be done, underground and overground transport must be cleaned and refuelled. Then from the outer ring of London, past green fields and suburban gardens, the move into London begins. Trains, motor omnibuses, and electric trams bring hundreds of thousands into the centre of the city, to work in the shops, offices, and factories of the largest city in the world.

| | | |
|-------------------------------|---|---------------------------------|
| SPECTATOR | SOUND | TIME: 10 MINUTES |
| SHORT FILMS | LENGTH: 35 MM.: 960 ft. 16 MM.: 384 ft. | |
| <i>Production: Ivan Scott</i> | | <i>Direction: R. Carruthers</i> |



Above: GOOD SPORT
Below: CAMPANIONS

Companions

CAMPING WITH THE BOY SCOUTS

A day with the Scouts in camp. The fun of sleeping under canvas, and cooking over log fires. Games in the clean country air. Rope-spinning and quarter-staff play—both harder than they look. Mighty appetites that call for mountains of potatoes and oceans of savoury stew. A sing-song after dark, when the crackling flames send your shadows leaping over the white tents. 2½ million boys in 46 countries learning the ways of health and good fellowship—and all started 27 years ago when Baden-Powell formed his first troop of 25 boys.

HERBERT WILCOX SOUND TIME: 10 MINUTES
PRODUCTIONS LENGTH: 35 MM.: 900 ft. 16 MM.: 360 ft.

Direction: A. F. Bundy

Good Sport

BRITAIN AT PLAY

Britain is the cradle of sport. Cricket, played on the village green or on famous grounds like Lord's and the Oval; golf, which grows more popular every year; tennis, played on modest suburban courts or at world-famous Wimbledon; Association football, with its tens of thousands of 'fans' yelling themselves hoarse at the Cup Final, and Rugby, not quite so popular though it draws its crowds; boxing, swimming, diving, cycling, and polo—this for the select few only—and the most famous events of all, the Derby and the Boat Race between Oxford and Cambridge Universities.

PATHÉ SOUND TIME: 10 MINUTES
PICTURES LENGTH: 35 MM.: 976 ft. 16 MM.: 390 ft.

The Green Girdle

IN TECHNICOLOR

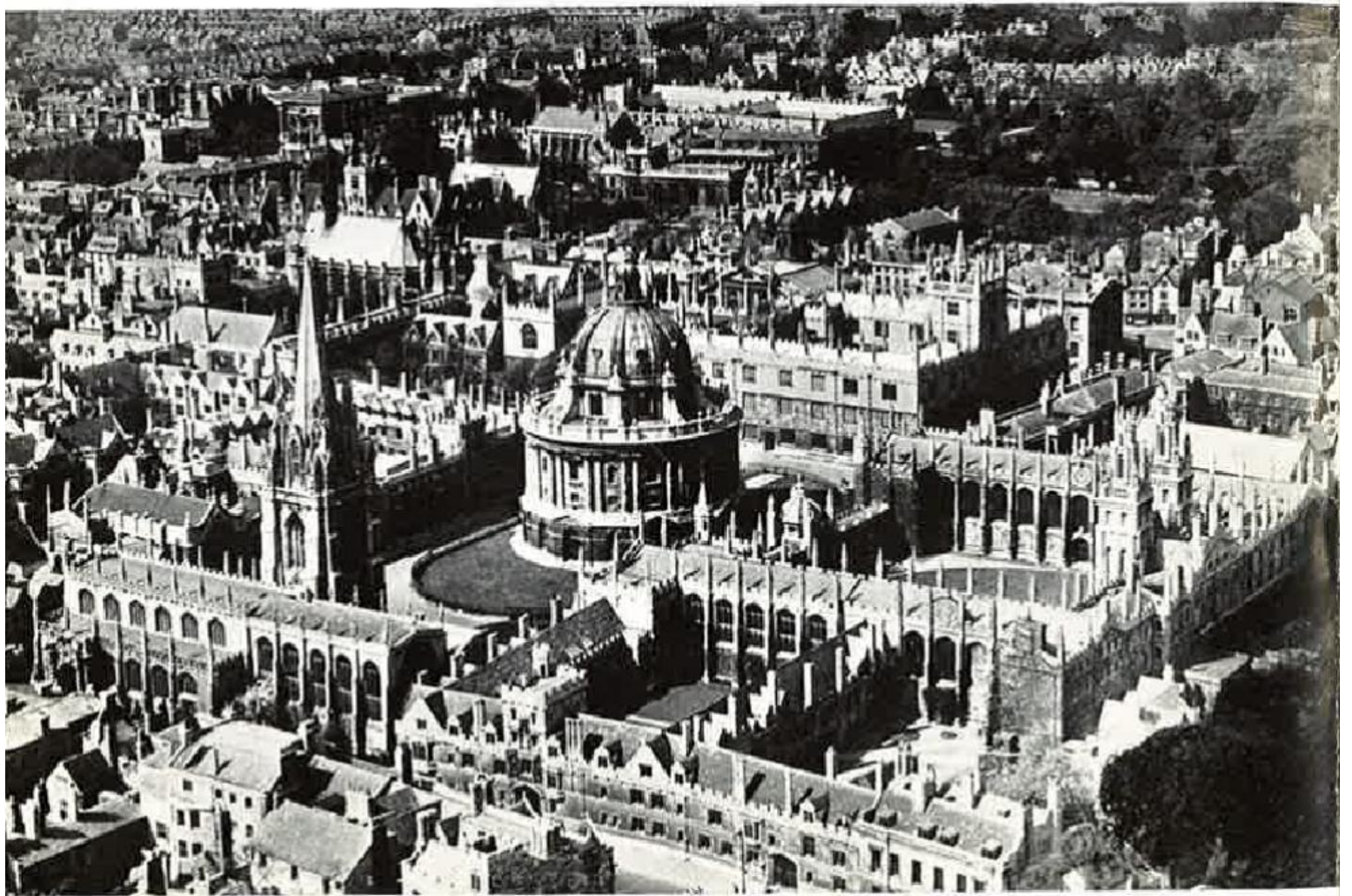
LONDON'S GREAT OUTDOORS

London is surrounded on all sides by open spaces—common lands, in the shape of parks, hills, and forests which can never be built upon. This belt of green around the Metropolis is at every point within reach of the city's centre by omnibus. From its busy streets and workplaces the Londoners go out into the lovely woods, the great expanse of furze and scrub, the sloping green terraces and the sweeping hillsides in pursuit of health and recreation. Some walk, some ride, some picnic, others study at first hand the wild life of birds, beasts and plants.

STRAND SOUND TIME: 10 MINUTES
FILM CO. LENGTH: 35 MM.: 919 ft. 16 MM.: 368 ft.

Production: Basil Wright

Direction: Ralph Keene



Above: LAND OF INVENTION
OXFORD

Land of Invention

FAMOUS SCOTTISH INVENTORS

Scotland is a beautiful land, though rugged, and has been the nurse of many famous inventors. Macadam, creator of the macadamized road; Watt, who built the first locomotive engine; Murdock, who showed us how to light our cities with gas; Nasmyth, inventor of the steam-hammer; Telford, builder of the Caledonian canal; Henry Bell, who built the first steamship; Alexander Bell, the first man to transmit the human voice along an electric wire; Simpson, who developed the use of chloroform; Ross, who conquered malaria; and a host of others whose greatness dwarfs the barren careers of modern dictators.

BRITISH SOUND TIME: 11 MINUTES
FILMS LENGTH: 35 MM.: 1,041 ft. 16 MM.: 416 ft.

Production: Andrew Buchanan

Merseyside

THE MERSEY—LIVERPOOL'S RIVER

Near Buxton, in beautiful surroundings, rises a little stream, the Goyt. On its way to the sea the Goyt is joined by other rivers to become the great Mersey, one of the main arteries of Great Britain's industry. At Stockport, the river loses its rural beauty and becomes a commercial waterway, spanned at Runcorn by the largest Transporter bridge in the world.

Further down, the Manchester Ship Canal joins the now mighty river. So on to where stand Birkenhead and Liverpool, two of England's greatest ports, linked together by the great engineering achievement, the Mersey Tunnel. In these two towns, mile upon mile of docks confront the eye, as befits the gateways of the New World.

LIBERTY SOUND TIME: 11 MINUTES
FILMS LENGTH: 35 MM.: 1,000 ft. 16 MM.: 400 ft.

Production: J. Fenn

Direction: M. Chorlton

Oxford

THE UNIVERSITY CITY

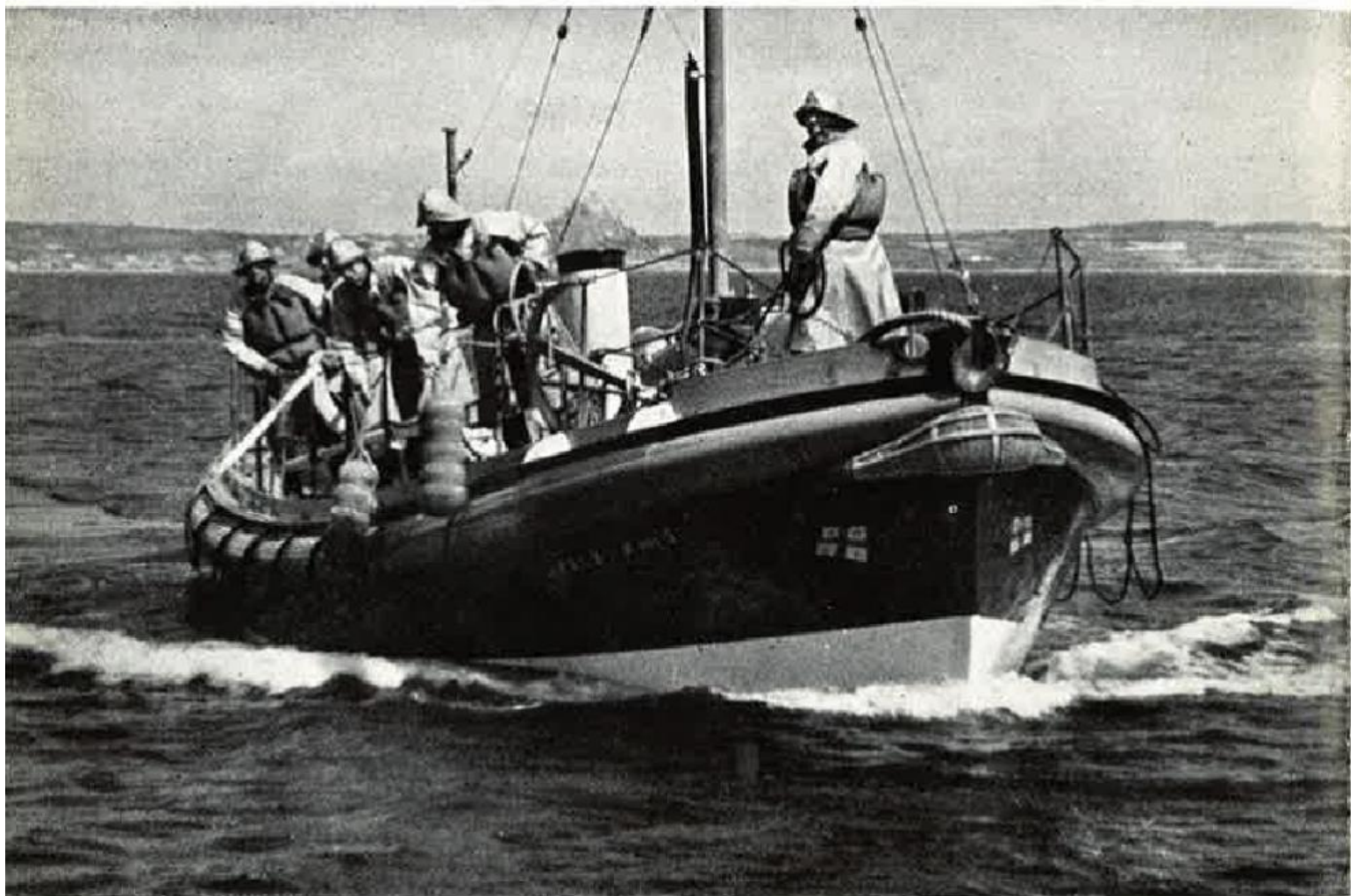
For more than seven hundred years Oxford has existed as a centre of learning and culture. But it is not only a city of the past, loving and caring for its great traditions; it is also a city of the present and the future. Its streets are thronged with the young men and women who one day will provide Britain's scholars, scientists, and statesmen. In the University, students from far off parts of the Empire, rich men's sons, and scholarship winners from Britain's industrial areas share alike the knowledge and culture offered by the University.

STRAND SOUND TIME: 10 MINUTES
FILM CO. LENGTH: 35 MM.: 898 ft. 16 MM.: 370 ft.

Silent Version also available

Production: Alex Shaw

Direction: Ralph Bond



Above: MASTERY OF THE SEA
Below: SOS

Mastery of the Sea

THE TRADE ROUTES OF BRITAIN

At all points the British Navy, the greatest in the world, stands ready—thousands of men in thousands of ships, whose deeds—not against unarmed merchantmen, but in fair fight—have written chapter after chapter in history. One of its greatest pages is the Convoy system, by which tramps, liners, cargo boats, ships big and small, neutral and British, steam ahead, covered by the guns of the fleet. Never for a moment are they without protection. And safely they make port. Thanks to our Navy, the seaways of the World are open.

EALING
STUDIOS

SOUND

TIME: 18 MINUTES

LENGTH: 35 MM.: 1,641 ft. 16 MM.: 673 ft.

Silent Version also available

Production: A. Cavalcanti

Sea Scouts

YOUTH CARRIES ON A GREAT TRADITION

For four hundred years Englishmen have gone forth to seek new lands beyond the sea: Drake, Hawkins, Cook, Clive, Livingstone, Scott . . . great sea captains, adventurers, explorers, pioneers laying the broad foundations of a brotherhood of free peoples, the British Commonwealth of Nations. To-day, the Sea Scouts carry on the seafaring tradition, and it is fitting that Captain Scott's famous command *Discovery* should be their training ship. There they learn swimming, life-saving, boat-building, seamanship, morse-telegraphy, signalling—all the lore of the sea.

TECHNIQUE
FILMS

SOUND

TIME: 11 MINUTES

LENGTH: 35 MM.: 1,000 ft. 16 MM.: 400 ft.

Direction: Julian Wintle

S O S

THE WORK OF THE LIFEBOATS

Britain's lifeboatmen must be ready at all times to put to sea to help sailors in distress. At a lifeboat station in Cornwall fishermen are ready to man the lifeboat and go to the aid of any ship in distress however rough the sea. From time to time an inspector from the headquarters of Britain's voluntary lifeboat organization, the Royal National Lifeboat Institution, carries out a rigid inspection and test of the boat. A fault in the propeller is remedied in time for the men to put out to sea in response to an S O S from a ship in difficulties.

ELDRIDGE
AND CURTIS

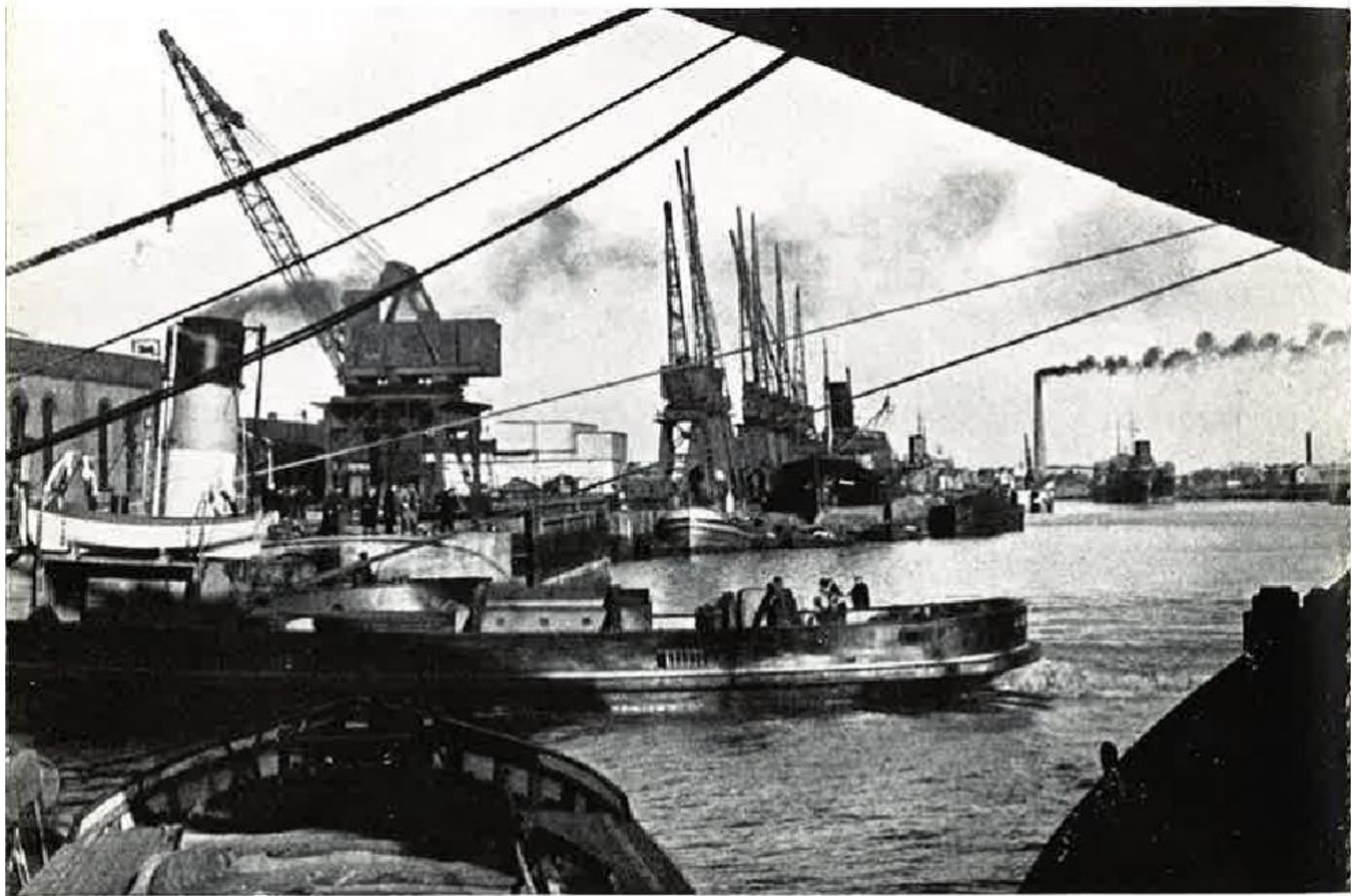
SOUND

TIME: 13 MINUTES

LENGTH: 35 MM.: 1,180 ft. 16 MM.: 468 ft.

Silent Version also available

Production and Direction: John Eldridge



Above: SAILORS WITHOUT UNIFORM
Below: WESTERN WATERWAY

Sailors Without Uniform

FISHERMEN OF BRITAIN

Along the coast of Britain live communities of fishermen, the men of the trawlers and drifters. They set out in small boats on journeys of anything from twenty to four thousand miles in search of the harvest of the sea. Leaving in the grey dawn for a three or four weeks' voyage, the men are ready to face any kind of weather and to meet the dangers of the sea. Once the catch is made, the boats race for home to be first at the market. Now that war has come, many fishermen are away from their jobs, working on the minesweepers or serving in the Royal Navy.

SPECTATOR SOUND TIME: 10 MINUTES
SHORT FILMS LENGTH: 35 MM.: 927 ft. 16 MM.: 380 ft.

Silent Version also available

Production and Direction: Ivan Scott

Ulster

NORTHERN IRELAND: IN PEACE AND WAR

Ulster has long been known for three things: its great shipyards, its fields of flax, and its scenic holiday attractions. Pleasant peace-time Ulster is now an active participant in the Empire's war effort. Its workers are turning out munitions and aircraft, and building ships for the Navy and the Merchant Fleet. Its flax fields are growing the raw material for clothing, and for aircraft fabric; its great factories are turning out nets for minesweepers and for camouflage; from its countless small farms come more and more foodstuffs to feed the war workers of Britain.

STRAND SOUND TIME: 12 MINUTES
FILM CO. LENGTH: 35 MM.: 1,127 ft. 16 MM.: 450 ft.

Production: Alex Shaw

Direction: Ralph Keene

Music composed by Richard Addinsell

Commentary by St. John Ervine

Western Waterway

WILTSHIRE'S AVON

From its source in the lovely Cotswold country, the Wiltshire Avon winds through quiet English scenery, presently reaching historic Bath, a city renowned for over two thousand years for the healing waters of its mineral springs. Leaving Bath, the river broadens, and flows on to Bristol, gateway of the west. To-day, Bristol is a city that mingles a rich past with a busy industrial and commercial present. Beyond Bristol the Avon widens, reaching the sea at Avonmouth, a dockland hive of industry and commerce.

B.S. SOUND TIME: 12 MINUTES
PRODUCTIONS LENGTH: 35 MM.: 968 ft. 16 MM.: 586 ft.

Direction: Paul Barralet



Above: SHEEPDOG
Below: WORKMATES

Sheepdog

THE SHEPHERD'S WORKMATE

What would a shepherd do without his sheepdog? Sheep wander over hundreds of acres of hilly countryside; and no shepherd could hope to watch them all unaided or to round them up at the day's end. So from early morning the dog is at work, ready at a signal from his master to marshal sheep from one pasture to another, to round up the stragglers, to search out an injured lamb or a sick ewe, and to protect the sheep against attack.

BRITISH SCREEN
SERVICES

SOUND

TIME: 15 MINUTES

LENGTH: 35 MM.: 1,424 ft. 16 MM.: 574 ft.

Direction: John Alderson

Workmates

THE HORSE IN INDUSTRY

In spite of the automobile, the horse has retained his place as a worker on many jobs. Three-and-a-quarter million horses are at work on British farms, helping to increase the nation's food supply. Another thirty-three thousand horses are employed in Britain's coalmines. These pit ponies are brought wild from Dartmoor or the Shetlands. When they are four years old, they are carefully trained for their work underground and are soon ready to take their place as workmates of the coalminer.

B.S.
PRODUCTIONS

SOUND

TIME: 19 MINUTES

LENGTH: 35 MM.: 1,773 ft. 16 MM.: 709 ft.

Direction: Paul Barralet

Morning Paper

A BRITISH NEWSPAPER IN TIME OF WAR

Despite air raids, the daily papers carry on. Reporters 'cover' the news, and press photographers get their pictures. The daily editorial conference is held, foreign news comes in by telephone and cablegram, special features are prepared, and the paper takes shape. Then comes the printing: setting the type, putting together the sheets, locking up the 'formes', taking off the papier-machés, taking off the semi-circular 'metals', putting the metals on the printing machines, till finally the mighty presses roar, and the paper comes out on time.

GAUMONT BRITISH
INSTRUCTIONAL

SOUND

TIME: 11 MINUTES

LENGTH: 35 MM.: 1,050 ft. 16 MM.: 420 ft.

Direction: Darrel Catling



QUEEN COTTON

Queen Cotton

IN TECHNICOLOR

LANGASHIRE COTTON

Nature has given Lancashire a moist atmosphere suited ideally to the spinning of yarn. Lancashire men have made it the greatest cotton-spinning and weaving centre in the world. Behind all this work research never ceases. Experts are ever trying out new fabrics, and fashion puts them to the loveliest uses. Dress designers, artists and operatives each play their part until eventually length after length of beautiful cloth emerges. Now it is fit material for transformation into a charming array of costumes and frocks, created by British dress designers whose names are known the world over.

MERTON PARK
STUDIOS

SOUND

TIME: 11 MINUTES

LENGTH: 35 MM.: 1,000 ft. 16 MM.: 400 ft.

*Direction: Cecil Musk***The Colour of England**

IN TECHNICOLOR

A COLOUR PICTURE OF THE POTTERY INDUSTRY

Of all the arts, the potter's is perhaps the most stimulating to watch—the deftness of finger and thumb, the malleable clay, the rhythm of the spinning mould, the sense of human craftsmanship that is in every stage of the work, achieving symmetry and balance in the drawing of a breath.

So from form to colour—colour for which the potters have drawn their inspiration largely from the flowers and the countryside—the colour of England's good earth.

GAUMONT BRITISH
INSTRUCTIONAL

SOUND

TIME: 11 MINUTES

LENGTH: 35 MM.: 1,000 ft. 16 MM.: 400 ft.

*Production: Mary Field**Direction: Darrel Catling***Daily Bread**

THE NATION'S BREAD SUPPLY

Bread is the staple food of most peoples, and the economic management of the nation's supply is of vital importance. For the blended flour, essential to good baking, wheat pours into Britain's granaries from the Dominions and from North and South America. Modern equipment and transport ensure the rapid loading, transit, and unloading of the enormous supplies. Day and night the mills work, grinding the corn into finest flour, so that each day the baker's cart in town and country may deliver the daily bread to every home.

MERTON
PARK STUDIOS

SOUND

TIME: 19 MINUTES

LENGTH: 35 MM.: 1,772 ft. 16 MM.: 775 ft.

*Production: Cecil Musk**Direction: M. Tully*



Above: BRINGING IT HOME
Below: JOHN BULL.

Bringing it Home

BRITAIN'S WARTIME FOOD SUPPLY

Although many essential foods are rationed, and every care is taken to ensure economy in the distribution and use of them, a greater part of Britain's food supply still comes from abroad. In wartime the food supply is menaced by submarine, by mine, and by aeroplane. To meet this attack on Britain's life line, the Navy runs convoys—twenty, thirty, or even forty ships travel together under armed protection. Day in and day out the men of the Merchant Navy brave the perils of the wartime seas to bring to Britain the foodstuffs and raw materials so essential to her people.

MERTON SOUND TIME: 19 MINUTES
PARK STUDIOS LENGTH: 35 MM.: 1,772 ft. 16 MM.: 708 ft.

Production: A. R. Taylor

Direction: John E. Lewis

Full Cycle

COAL AND WORLD TRADE

Trade is born of one nation's need and another's surplus. Beef from Argentina is only one of the things Great Britain must import. It finds its way to a working man's table, in this case a coal miner's. After changing his clothes and getting his lamps, he descends 750 yards into the earth, to commence his shift. The coal he hews is hoisted rapidly to the surface, weighed, washed and sorted so quickly and efficiently that by the time he is on his way home in the dusk, it is already going down to the sea to start on a journey to Argentina that will complete the full cycle of trade.

MERTON SOUND TIME: 11 MINUTES
PARK STUDIOS LENGTH: 35 MM.: 1,000 ft. 16 MM.: 400 ft.

Direction: John Lewis

John Bull

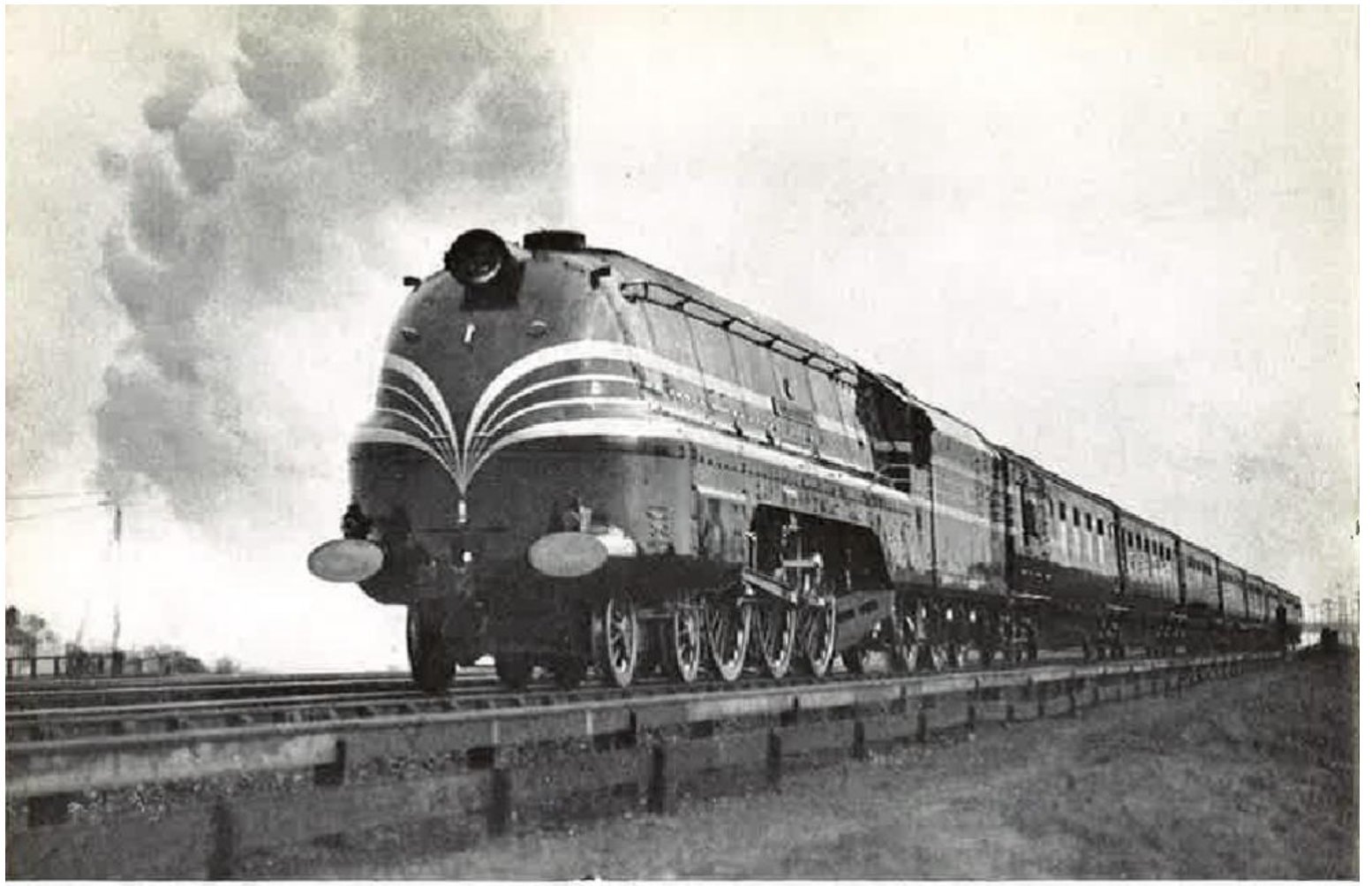
BRITAIN'S PRIZE HERDS

British pedigree bulls have given new life to cattle in countries all over the world. Robert Bakewell began the building up of strains which are now famous. Present day prize herds of Hereford, Shorthorn, Aberdeen-Angus, and Devon all have their various points of excellence and interest. The high standards achieved are the result of constant work and research, particularly by the various Herd Societies and by the Institute of Animal Genetics at Edinburgh University, where constant experiment and research into breeding problems are carried out.

SPECTATOR SOUND TIME: 11 MINUTES
SHORT FILMS LENGTH: 35 MM.: 1,000 ft. 16 MM.: 400 ft.

Production: Ivan Scott

Direction: Michael Hankinson



Above: LOCOMOTIVES
Below: STEEL GOES TO SEA

At Lloyd's

THE WORK OF LLOYD'S OF LONDON

Lloyd's services to world shipping are immense, and include signal stations, shipping agents—providing a unique information service, and rigid inspection of ship construction. A ship loaded with vital war cargoes leaves Valparaiso for Hull. Between Bilbao and Bermuda she is reported missing and anxious communications pass between the owners, Lloyd's, and the Lloyd's stations on the route. News of the ship's safe arrival at Bermuda is announced at Lloyd's by the ringing of the famous 'Lutine Bell', and after another diversion of route at the Lizard the ship arrives safely in England.

STRAND
FILM CO.

SOUND
LENGTH: 35 MM.: 1,000 ft. 16 MM.: 400 ft.

TIME: 11 MINUTES

Production: Donald Taylor

Direction: Ralph Bond

Locomotives

BRITAIN AND THE WORLD'S RAILWAYS

Since Stephenson built the first steam locomotive in 1830, the five continents have been spanned by railways. Many of these were planned by British engineers, and British workshops supplied the equipment for the first tracks laid down in France, Germany, Holland, Belgium and Russia. British rails and locomotives were used in Australia, New Zealand, Venezuela, Colombia, and nearly all the railways of South America were British built and financed. In spite of the war, British locomotives are still supplied to foreign railways, and new streamlined engines have just been completed for the Government of Iraq.

SPECTATOR
SHORT FILMS

SOUND
LENGTH: 35 MM.: 900 ft. 16 MM.: 360 ft.

TIME: 10 MINUTES

Production: Ivan Scott

Direction: Robin Carruthers

Steel Goes to Sea

THE BUILDING OF A SHIP

Britain's shipbuilders build ships for service all over the world. Yet of the thousands coming each year from the yards, no two ships are alike: each one has its own distinctive personality. First looking just a confused tangle of steel, the ship slowly begins to take shape. As the work progresses the outlines of a ship emerge. Carpenters, plumbers, painters and electricians then take over, and soon the ship will be floating on its first tide. Back in the yards the shipbuilders are laying another keel.

MERTON
PARK STUDIOS

SOUND
LENGTH: 35 MM.: 1,531 ft. 16 MM.: 620 ft.

TIME: 16 MINUTES

Direction: J. E. Lewis



Above: CARRY ON, CHILDREN
Below: DARTMOUTH

Carry on, Children

BRITONS OF THE FUTURE

A civilized nation's first concern is for its children. To provide for the care of British children the country has built up an extensive system of social services. Before the baby is born the mother is given advice and treatment at special clinics. After its birth she takes it to a welfare centre where the infant's health is regularly cared for and the mother receives advice on the rearing of her child. From then until the child leaves school its health is carefully guarded.

| | | |
|-------------------------------|---|-------------------------------------|
| SPECTATOR | SOUND | TIME: 11 MINUTES |
| SHORT FILMS | LENGTH: 35 MM.: 1,000 ft. 16 MM.: 405 ft. | |
| <i>Production: Ivan Scott</i> | | <i>Direction: Michael Hankinson</i> |

City of Progress

THE LONDON COUNTY COUNCIL

Fifty years ago Londoners won the right to manage their own city, and to-day it is governed by 124 men and women, elected by their fellow citizens, and who, without payment, serve on the London County Council.

They have cleared slums, built new hospitals, some of them far in the country, and so London's children have been helped over tuberculosis and infantile paralysis.

London's schools are in the van of educational progress, and its children are now shown much of the story of their city at work.

The Council has given London its parks, oases set in the very heart of all the bricks and concrete that house four-and-a-half million people. To-day a balloon barrage hangs overhead. But the work must still go on . . . for to-morrow's London shall be greater still.

| | | |
|-----------|---|------------------|
| REALIST | SOUND | TIME: 10 MINUTES |
| FILM UNIT | LENGTH: 35 MM.: 943 ft. 16 MM.: 378 ft. | |

Dartmouth

THE ROYAL NAVAL COLLEGE

Britain rises from the sea, that is at once her history and her destiny, guarded by a mighty fleet, manned by sons of Britain, trained in the discipline and tradition of centuries.

The training of the captains of the future starts early in life—the boys are chosen carefully for their educational and physical qualifications, without social prejudice.

Dartmouth gives, like all great English schools, a general education of high standard—but how much more. The uniform, the houses called after famous Admirals whose names are the stuff of British history, the lessons in navigation, rowing and swimming, and all the other things that go to the making of good seamanship. And so this fine, broad education goes on to fit the boys of Dartmouth, whether the sons of kings or commoners, to become officers and gentlemen of the King's Royal Navy.

| | | |
|-------------------------------|---|-------------------------------------|
| SPECTATOR | SOUND | TIME: 11 MINUTES |
| SHORT FILMS | LENGTH: 35 MM.: 1,000 ft. 16 MM.: 400 ft. | |
| <i>Production: Ivan Scott</i> | | <i>Direction: Michael Hankinson</i> |



Above: OUT OF THE NIGHT
Below: PLAYTIME

Learning to Live

BRITISH CHILDREN AT SCHOOL

In the morning, three children of three different ages set out for school. The first child goes to a Nursery School where he learns behaviour, concentration through playing games, and the rudiments of reading and writing. The second child is attending her last term at a Junior School for boys and girls before passing on to higher education. The third child is being prepared to take a place in the working world at one of the higher schools. At all stages of education in Britain the use of up-to-date equipment and modern buildings encourages the development of the best in the children.

MERTON

SOUND

TIME: 11 MINUTES

PARK STUDIOS

LENGTH: 35 MM.: 1,000 ft. 16 MM.: 400 ft.

Direction: H. V. Purcell

Out of the Night

WHAT ENGLAND DOES FOR THE BLIND

Britain's hospitals do all they can to prevent blindness by guarding each child against eye trouble as soon as it is born. But there must always be some blind children, and for them Britain has special homes, where they are educated and taught to find their way about the world. Later they go on to higher schools, training themselves for professions, or even for a university career. More difficult is the problem of those who lose their sight later in life. They too are given special care and training, and are encouraged to learn simple trades, dispelling darkness with careers of interest and usefulness.

REALIST

SOUND

TIME: 10 MINUTES

FILM UNIT

LENGTH: 35 MM.: 980 ft. 16 MM.: 392 ft.

Production: John Taylor

Direction: Max Anderson

Playtime

BRITISH CHILDREN OUT OF SCHOOL

When school ends for the day, children leave the grown-up world of education for their own world of play and make-believe. Boys go fishing with sticks for rods, string for lines, and bent pins for hooks, or play in farm and orchard. Other children play at being doctors and nurses, or build models for amusement. Some games are organized by the schools, others are played by the children for themselves. From all of these games the children learn the same lesson of self-reliance and team spirit that fosters and encourages the love of freedom and the spirit of independence among Britain's future citizens.

RAYLTON

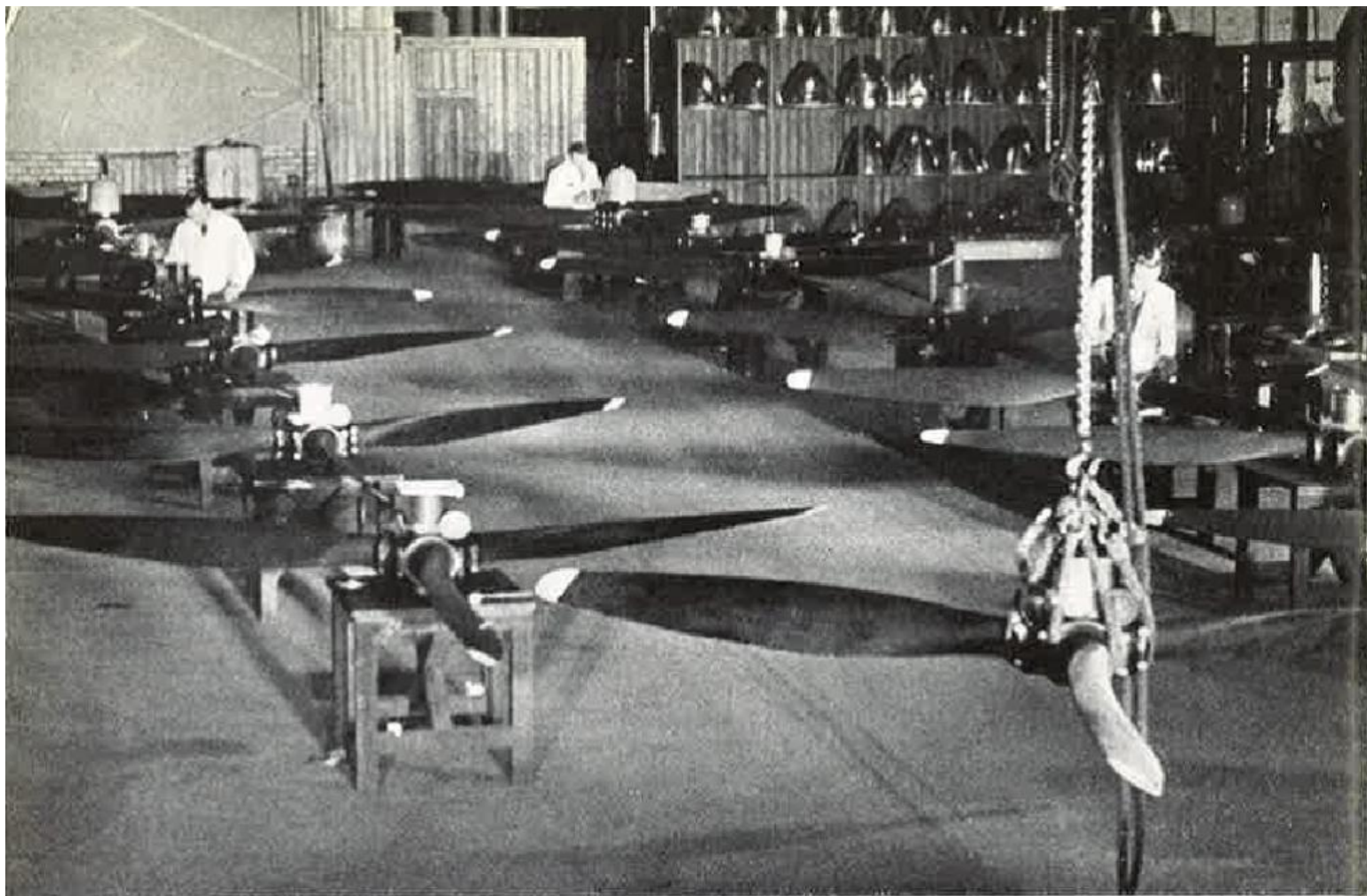
SOUND

TIME: 11 MINUTES

PRODUCTIONS

LENGTH: 35 MM.: 1,000 ft. 16 MM.: 400 ft.

Direction: Ray Elton



Above: AIRSCREW

Below: TURN OF THE FURROW

Airscrew

THE MAKING AND TESTING OF AIRSCREW BLADES

Safety in the air depends upon a host of technicians and highly skilled mechanics whom the pilot never sees. Nowhere is this shown more clearly than in the making of an airscrew blade, for the aluminium alloy from which it is fashioned is carefully tested before being used, and at every stage in the process—from the pressing of the rough blade from a heated billet of metal to the final smooth grinding—the work is supervised and checked by experts.

| | | |
|-----------|---|------------------|
| SHELL | SOUND | TIME: 21 MINUTES |
| FILM UNIT | LENGTH: 35 MM.: 1,941 ft. 16 MM.: 776 ft. | |

Production: Arthur Elton

Direction: Grahame Tharp

Hydraulics

A SIMPLE PRINCIPLE WITH FAR-REACHING APPLICATIONS

A liquid easily changes its shape, but it cannot be compressed. If it is subjected to pressure at one point, the displaced liquid flows to another, and an equal pressure is exerted there. This property has thousands of applications. It makes pumps and hydraulic jacks possible, and it enables engineers to supply power for heavy goods lifts, for cranes at the docks, and for pressure-driven machinery of all kinds. Some of the more recent applications are in the hydraulic methods used for the controls in an aeroplane.

| | | |
|-----------|---|------------------|
| SHELL | SOUND | TIME: 13 MINUTES |
| FILM UNIT | LENGTH: 35 MM.: 1,184 ft. 16 MM.: 475 ft. | |

Production: Arthur Elton

Direction: Ralph Elton

Turn of the Furrow

THE TRACTOR IN MODERN FARMING

The tractor has revolutionized farming. With it a farmer can plough or sow many times faster than with horses, and pneumatic tyres, interchangeable with the steel wheels, permit it to be used for carting jobs. Tractors have accustomed farmers to all sorts of machinery: machines that can sweep up hay, run it into bales, tie them with wire, and deliver them on a trailer at the rate of two tons an hour; machines that spray a field of wheat with acid which kills insects without injuring the crop; machines for every purpose, both in the barnyard and the hayfield.

| | | |
|-----------|---|------------------|
| SHELL | SOUND | TIME: 20 MINUTES |
| FILM UNIT | LENGTH: 35 MM.: 1,859 ft. 16 MM.: 543 ft. | |

Production: Edgar Anstey

Direction: Peter Baylis



Above: FARMER'S DAY

Below: THE STORY OF THE APPLE.

Farmer's Day

WORK ON AN ENGLISH FARM

Long before townsfolk are awake, the country farmer is astir, preparing for his long day's work. From five o'clock the work is almost continuous—there is milking, care of the farm machinery and buildings, the harvesting of crops, the provision of feeding stuffs, and the careful daily reckoning of income and expenditure. The job of the farmer is the same the world over; but its methods and scope vary from place to place. When the English farmer sits down to a quiet smoke before going to bed, he can look back with satisfaction on his hard day's work.

SELWYN
FILMS

SILENT

TIME: 14 MINUTES

LENGTH: 35 MM.: 1,292 ft. 16 MM.: 517 ft.

Production: C. R. Radley

Direction: Brian Smith

Seed Production

THE WORK OF THE WELSH PLANT BREEDING STATION

At the Welsh Plant Breeding Station new strains of clover and grasses are produced by cross-breeding. Hybrid seeds obtained by artificial pollination are threshed by hand and picked out of the flowers with forceps. The breeding of a new strain involves years of work. As soon as it is established single plants are grown in pollen-proof greenhouses, and the seeds obtained from this crop sown in areas from a half to six acres. The film shows the many precautions taken to protect the new strains from contamination by unwanted pollen.

GAUMONT BRITISH
INSTRUCTIONAL

SOUND

TIME: 17 MINUTES

LENGTH: 35 MM.: 1,541 ft. 16 MM.: 616 ft.

Direction: J. V. Durden

The Story of the Apple

SCIENCE IN THE ORCHARD

British growers can produce apples which are as perfect in quality and as uniform in size as any machine-made article. But it means endless care and unceasing war against insect and fungus enemies. Insecticides are sprayed under pressure until every cranny of the bark is reached and insect eggs destroyed. Skilled pickers gather the ripe fruit, which is graded by machinery and hand before being packed into boxes. Then brand labels are applied, and the apples are ready for market.

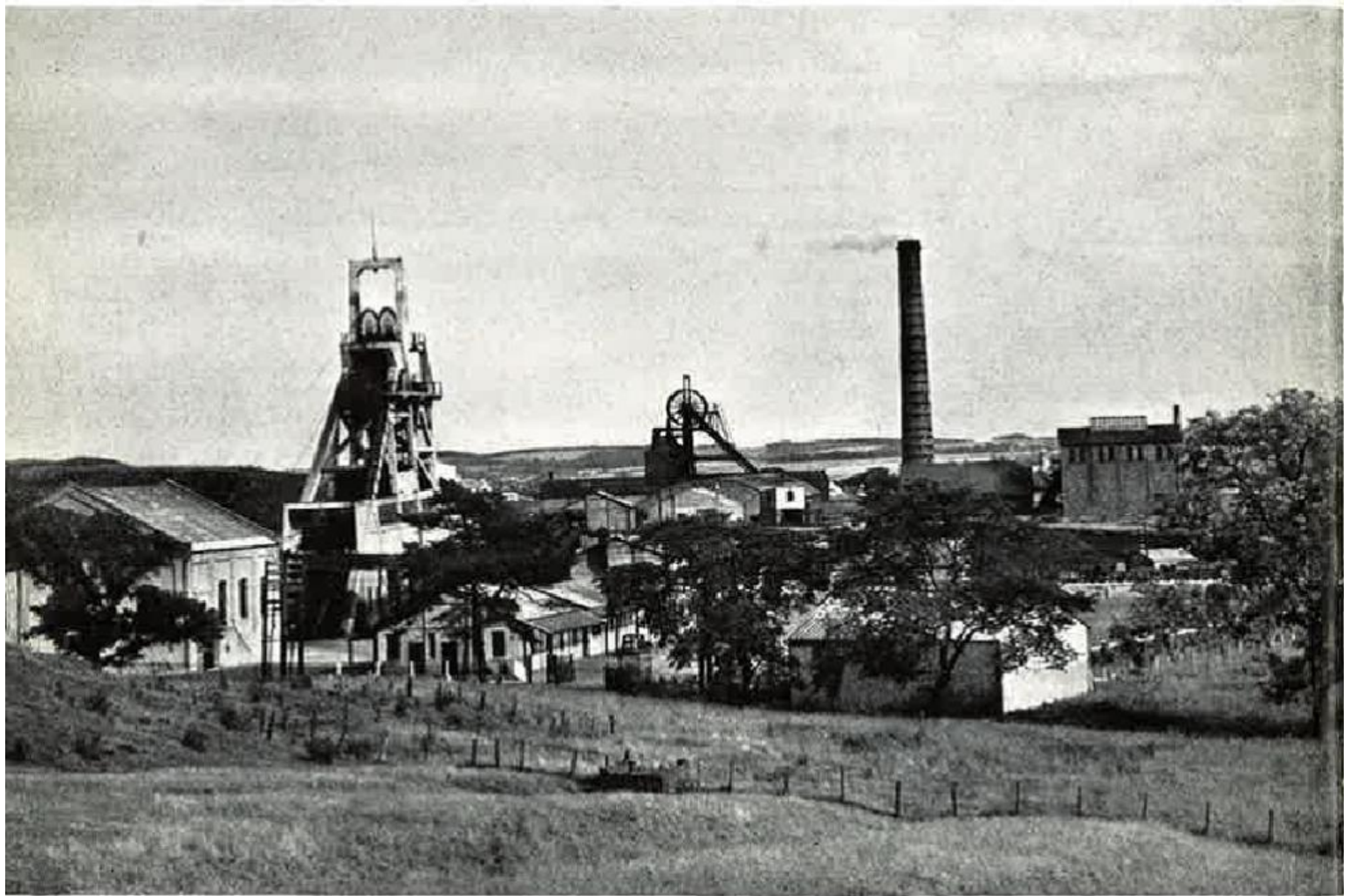
BRITISH
FILMS

SOUND

TIME: 10 MINUTES

LENGTH: 35 MM.: 964 ft. 16 MM.: 385 ft.

Production: Harvey Harrison



Above: THE STORY OF WOOL
Below: WEALTH FROM COAL

Power in Store

THE ELECTRIC BATTERY

For many purposes, electricity must be kept in store to be drawn as wanted. This storehouse is the battery, the manufacture of which, as we see, calls for great care at every stage, from the designing to the final and service tests.

The battery is the hidden power behind the spinning wheels of buses, lorries, vans and private cars—all depend upon the little black box.

And to-day, in ever-increasing numbers, the same black boxes take the air in bomber, fighter and reconnaissance plane. To every engine on land and in the air, the battery is as important as the fuel it burns.

TIDA
FILMS

SOUND
LENGTH: 35 MM.: 900 ft. 16 MM.: 360 ft.

TIME: 10 MINUTES

The Story of Wool

THE GROWTH OF A GREAT INDUSTRY

For centuries raw wool was Britain's leading export. Then French and Dutch refugees founded our weaving industry, and soon there were thousands of cottage weavers. The weaving of wool was revolutionized by the power-loom in the eighteenth century; and to-day a vast mechanized industry employs 375,000 workers. Every year the Dominions send 650 million pounds of wool to London, where it is auctioned and distributed to the manufacturers, to be sorted, cleaned and prepared for weaving.

GAUMONT BRITISH
INSTRUCTIONAL

SOUND
LENGTH: 35 MM.: 1,885 ft. 16 MM.: 754 ft.

TIME: 20 MINUTES

Production: Darrel Catling

Wealth from Coal

SOME OF THE BY-PRODUCTS OF COAL

Vast and varied wealth can be extracted from coal: coke and gas, tar for dyes and disinfectants, benzole, toluene for explosives, artificial manures to increase the productivity of the soil, and new materials called plastics from which telephones and ash-trays are mass-produced. There are even plastic airscrews for our fighters, and transparent unsplinterable plastics have replaced glass in our bombers' gun-turrets. From coal, too, is prepared a compound called M. & B. 693 which has reduced the death rate from pneumonia by more than two-thirds, and has proved successful against other diseases.

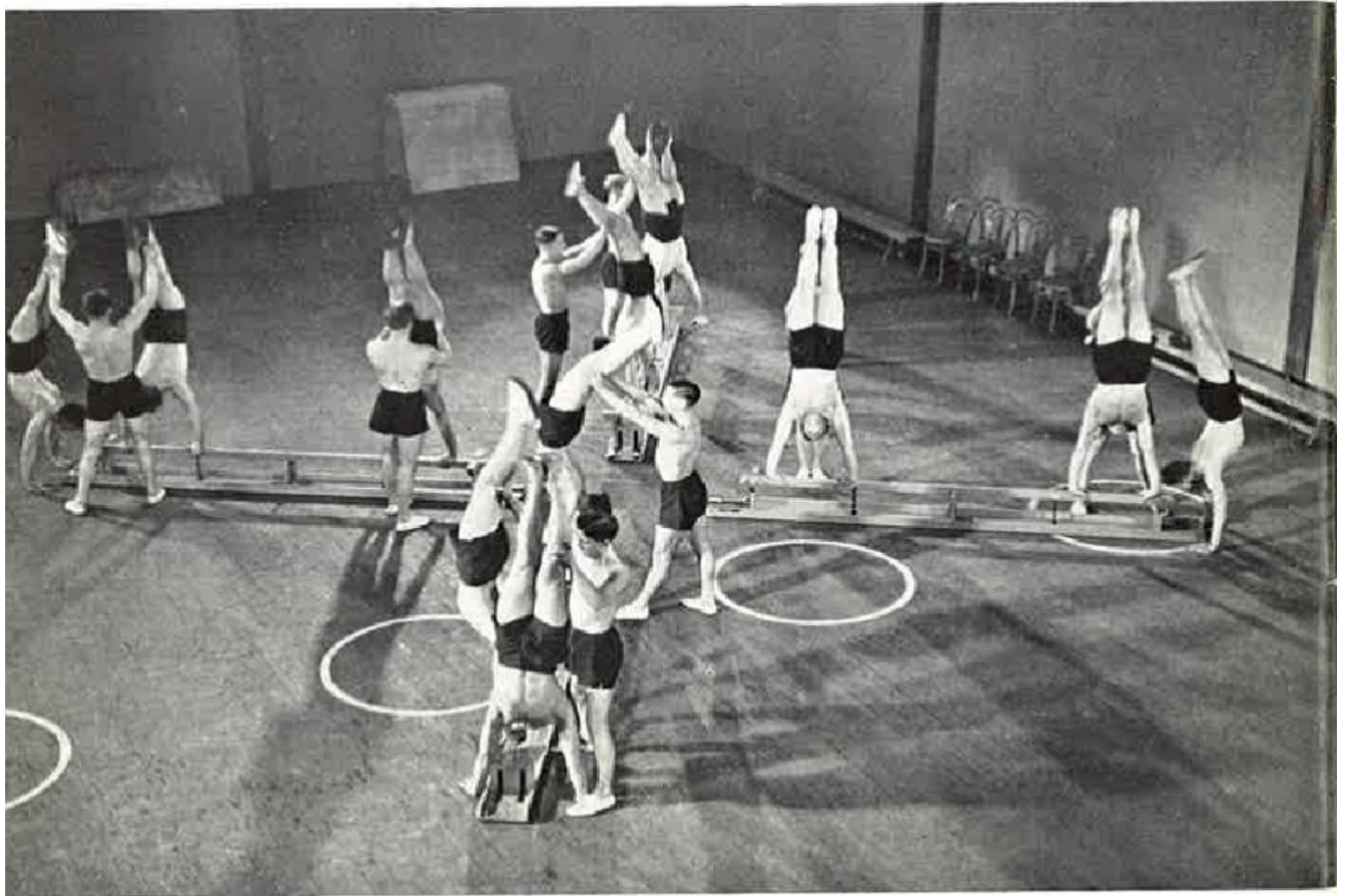
REALIST
FILM UNIT

SOUND
LENGTH: 35 MM.: 1,000 ft. 16 MM.: 400 ft.

TIME: 11 MINUTES

Production: John Taylor

Direction: Arthur Anstey



PHYSICAL TRAINING

Twenty Men and a Leader

Games have always appealed to mankind. Here are massed ones that are different. Some are amazing, some amusing, some exciting, all executed with equal precision.

TIME: 11 MINUTES LENGTH: 35 MM.: 1,014 ft. 16 MM.: 406 ft.

Five Fit Fellows

This film seems to make child's work of what are actually very difficult gymnastic exercises. The grace and rhythm of the movements are emphasized by pictures in slow motion.

TIME: 11 MINUTES LENGTH: 35 MM.: 1,037 ft. 16 MM.: 414 ft.

1939

Four and Twenty Fit Girls

To-day the whole world goes in for physical fitness. Here are shown exercises for women, nothing strenuous, but ranging from swing exercises to fancy skipping.

TIME: 11 MINUTES LENGTH: 35 MM.: 1,057 ft. 16 MM.: 422 ft.

1939

Eighteen Girls and a Horse

Although the horse is only a vaulting horse, it can just as easily bring the inexperienced to grief as the real article. This film shows what can be done by continual practice.

TIME: 8 MINUTES LENGTH: 35 M.M.: 850 ft. 16 M.M.: 300 ft.

1939

Beginners, Please

All physical training must have a beginning, and it is as well to start with light exercises. Here are shown games that are designed to ease the muscles before going into more involved movements.

TIME: 10 MINUTES LENGTH: 35 MM.: 930 ft. 16 MM.: 372 ft.

Fitness Wins the Game

Football, cricket, cycling, boxing, hurdling and throwing the discus, all require hard training. This film, as well as demonstrating the actual games, shows how to train for them.

TIME: 11 MINUTES LENGTH: 35 MM.: 1,031 ft. 16 MM.: 412 ft.

1940

Invitation to the Dance

Dancing is recognized as being highly beneficial. In addition to providing recreation, it gives grace and poise. The film shows movements that will improve everybody's dancing.

TIME: 8 MINUTES LENGTH: 35 MM.: 884 ft. 16 MM.: 354 ft.

1939

GAUMONT BRITISH INSTRUCTIONAL SOUND

Direction: Mary Field and Donald Carter

Commentator: E. V. H. Emmett

Atlantic

EMPIRE ROUND THE ATLANTIC

The course of history unfolds across the screen. Five hundred years ago the only known part of the Atlantic seaboard was the coast of Europe. Columbus sailed across the Atlantic in 1492, and John Cabot discovered Newfoundland in 1497. The task of opening up lands around the Atlantic has been shared by many nations. British, French, Dutch, Spaniards and Portuguese built empires and created free nations in the New World, contributing to the vast traffic passing backwards and forwards across the ocean.

GAUMONT BRITISH SOUND TIME: 26 MINUTES
INSTRUCTIONAL LENGTH: 35 MM.: 2,362 ft. 16 MM.: 944 ft.

Supervision: Professor A. P. Newton, C.B.E. Direction: Mary Field
Photography: Brian Salt Music: Jack Beaver
Diagrams: Diagram Films Ltd.

Indian Ocean

IN TECHNICOLOR

THE EMPIRE ROUND THE INDIAN OCEAN

Barred from the East Indies, the British established themselves on the mainland of India, where they were followed by the French. The rivalry of these two great nations led to their entry into the politics of India and intense trade, political and naval rivalry until the fall of Napoleon in 1815. British influence then spread eastwards. But the tendency to shorten the journey from Europe to the East led to much traffic up and down the Red Sea. The cutting of the Suez Canal made this entrance to the Ocean of paramount importance and there was a rush of European countries to stake claims on the East coast of Africa.

GAUMONT BRITISH SOUND TIME: 13 MINUTES
INSTRUCTIONAL LENGTH: 35 MM.: 1,200 ft. 16 MM.: 450 ft.

Supervision: Professor A. P. Newton, C.B.E. Direction: Mary Field
Photography: Brian Salt Diagrams: Diagram Films Ltd.

Pacific

IN TECHNICOLOR

THE EMPIRE ROUND THE PACIFIC OCEAN

The history of the Pacific Ocean begins from its discovery by Balboa in 1513. For years Europeans were lured on in their voyages by the fabled riches of a 'Terra Australis'. But, at the end of the eighteenth century, Captain James Cook, using modern surveying instruments, mapped the Pacific accurately for the first time. The first white men to make a settlement in the newly discovered areas were the British at Sydney in 1788. On the other side of the Ocean the people of the Americas developed its Eastern shores.

GAUMONT BRITISH SOUND TIME: 13 MINUTES
INSTRUCTIONAL LENGTH: 35 MM.: 1,200 ft. 16 MM.: 450 ft.

Supervision: Professor A. P. Newton, C.B.E. Direction: Mary Field
Photography: Brian Salt Diagrams: Diagram Films Ltd.

Index

| | <i>Page</i> | | <i>Page</i> |
|--------------------------------------|-------------|--|-------------|
| British News | 3 | | |
| GENERAL | | | |
| Answer, The | 5 | | |
| Architects of England | 5 | | |
| Campanions | 7 | | |
| City Bound | 5 | | |
| Good Sport | 7 | | |
| Green Girdle, The | 7 | | |
| Land of Invention | 9 | | |
| Mastery of the Sea | 11 | | |
| Merseyside | 9 | | |
| Morning Paper | 15 | | |
| Oxford | 9 | | |
| Sailors without Uniform | 13 | | |
| Sea Scouts | 11 | | |
| Sheepdog | 15 | | |
| S O S | 11 | | |
| Ulster | 13 | | |
| Western Waterway | 13 | | |
| Workmates | 15 | | |
| INDUSTRY AND COMMERCE | | | |
| A1 at Lloyd's | 21 | | |
| Bringing it Home | 19 | | |
| Colour of England, The | 17 | | |
| Daily Bread | 17 | | |
| Full Cycle | 19 | | |
| John Bull | 19 | | |
| Locomotives | 21 | | |
| Queen Cotton | 17 | | |
| Steel goes to Sea | 21 | | |
| SOCIAL SERVICES | | | |
| Carry on, Children | 23 | | |
| City of Progress | 23 | | |
| Dartmouth | 23 | | |
| Learning to Live | 25 | | |
| Out of the Night | 25 | | |
| Playtime | 25 | | |
| TECHNICAL | | | |
| Airscrew | 27 | | |
| Farmer's Day | 29 | | |
| Hydraulics | 27 | | |
| Power in Store | 31 | | |
| Seed Production | 29 | | |
| Story of the Apple, The | 29 | | |
| Story of Wool, The | 31 | | |
| Turn of the Furrow | 27 | | |
| Wealth from Coal | 31 | | |
| PHYSICAL TRAINING | | | |
| Beginners, Please | 33 | | |
| Eighteen Girls and a Horse | 33 | | |
| Fitness Wins the Game | 33 | | |
| Five Fit Fellows | 33 | | |
| Four and Twenty Fit Girls | 33 | | |
| Invitation to the Dance | 33 | | |
| Twenty Men and a Leader | 33 | | |
| EDUCATIONAL | | | |
| Atlantic | 34 | | |
| Indian Ocean | 34 | | |
| Pacific | 34 | | |
| NOTES | | | |
| | 36 | | |

Notes

- 1.** These films are available for cinema and non-theatrical distribution outside the British Isles, except in certain countries where the rights are already allocated.
- 2.** Separate lists of (a) EMPIRE films and (b) SILENT films can be supplied on request.
- 3.** When ordering films it is essential to state:—
 - (a) Sound or silent versions.
 - (b) 35 mm. or 16 mm. size.
- 4.** For technical reasons 16 mm. sound films cannot be shown on silent projectors.
- 5.** When ordering films, substitutes should be suggested in case those chosen are not available.
- 6.** Versions with Afrikaans, Dutch, French, Portuguese, Brazilian Portuguese, Spanish, and Colombian Spanish commentaries are available of some of the films.
- 7.** Certain films can be supplied with the music background only, so that commentaries in any language can be added.
- 8.** Copies of commentaries can be supplied.
- 9.** Teaching notes are available for many of the educational films.
- 10.** A large number of films in this catalogue have been certified by the Board of Education as being of an educational character, and are thereby allowed to be imported duty free into certain countries.
- 11.** Information regarding British films not included in this catalogue, whether long feature films or short documentaries, will be supplied on request.

All enquiries should be addressed to

THE BRITISH COUNCIL FILM DEPARTMENT
3 Hanover Street, London, W.1
England

